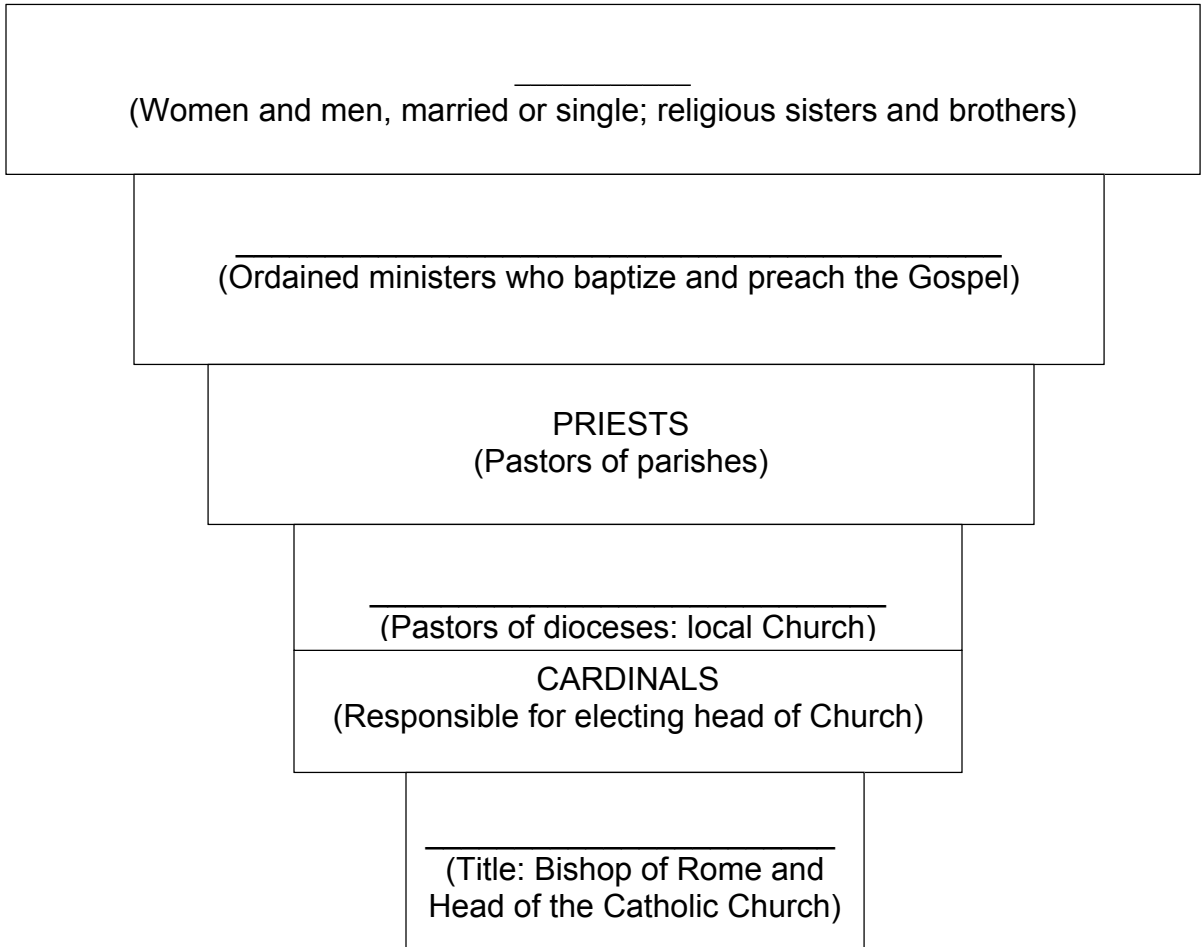


Jesus' Vision for His Followers

Illustrate the organization of the Church by filling in the blank spaces on the chart with the title of the group or role described in the boxes. Two boxes (Priests and Cardinals) have been filled in for you.



Why do you think the chart is drawn as an upside-down pyramid?

How does this visual depiction of the Church's structure relate to Jesus Christ, who washed the feet of his Apostles? (You may also use the back of this paper for your answer.)

